



A message from the Chair

Dear Fellow SPE members,

First of all, I would like to thank everyone who made the recent Golf Tournament another success. As you know, this is the key fund raising function for the Los Angeles Basin Section. This event relies on the work of many volunteers to plan and carry out this out smoothly, and of course relies also on the participation of a large number of our members.

I wanted to mention the SPE Western Regional Meeting (WRM) recently held in Anchorage in conjunction with the AAPG. One key event at this meeting was the Award lunch on May 9. I had the pleasure of accepting the regional Service Award for Raj Upadhyay. He was recognized for his exceptional efforts for assisting our Society, including his service as the 2004-2005 Chair for our Section. The WRM was an opportunity for the Regional SPE leadership to meet together and share perspectives from the several sections. Our Regional Director, Dr. Behrooz Fattahi, presented his vision for further adapting SPE in order to increase its value to our local membership. I can share the detailed minutes of this meeting with anyone interested.

Instead of the regularly scheduled lunch meeting for the month of June, we have a special event on June 13. Prof. Ershaghi from USC will be presenting a class, "The X-Plot Method for Analyzing Waterfloods". Note this class starts at 2:30, followed by dinner and a cash bar from 6 to 7. Contact Rick Finken (562-570-3961; Richard.finken@longbeach.gov) before June 6 to register (cost \$50).

Finally, be sure to look at the end of the newsletter if you have any interest in job opportunities in our industry. The demand for qualified people seems to still be increasing.

Sincerely,

Pat Shuler
LASPE Chairperson 2005-2006
pjshuler@peer.caltech.edu

In this issue:

- **A message from the Chair**
- **Special Petroleum Technology Forum June 13, 2006**
- **Golf Tournament Report**
- **Scholarship Report**
- **Board Report**
- **Positions Available**
- **Remember Thomas Benton**

Special Petroleum Technology Forum - JUNE 13, 2006

Please note that there will be no lunch meeting for the month of June 2006. In its place, a special workshop has been scheduled beginning at 2:30 of the afternoon of Tuesday, June 13, 2006 at the Long Beach Petroleum Club and followed by dinner and cash bar from 6 to 7 PM. The regular LASPE Board meeting will convene at 1 PM on June 13th at the Petroleum Club. This workshop is highly recommended for reservoir engineers, production geologists, production engineers, asset managers and petroleum engineering consultants.

LASPE Forum: Tuesday June 13, 2006

Registration: 2:00 PM

Presentation: 2:30– 5:30 PM

Dinner: 6:00-7:00 PM

Cost: \$50.00

Long Beach Petroleum Club

3636 Linden Avenue Long Beach, CA

90807



Dr. Iraj Ershaghi

LASPE Workshop: The X-Plot Method for Analyzing Waterfloods

This three-hour workshop will provide an opportunity for the participants to understand important signals embedded in waterflood performance data for making diagnostic evaluation and forecasting. It will be conducted by Professor Iraj Ershaghi, the author of the X-Plot method and will include the following topics:

- 1- Understanding waterflood performance data from the fractional flow concepts and the Buckley-Leverette leaky piston model.
- 2- Translating field data into analytical models for performance forecasting.
- 3- Extracting useful information from WOR and X-plots.
- 4- Case Studies

Instructor:

Dr. Ershaghi is the Omar B. Milligan Professor and the Director of the Petroleum Engineering Program at The Mork Family Department of Chemical Engineering and Material Science at the Viterbi School of Engineering, University of Southern California. He is also serving as the Regional Director of the U. S. Department of Energy, Petroleum Technology Transfer Council and as the Executive Director of USC-Chevron Center for Smart Oilfield Technologies (CiSoft). He has served on the Faculty since 1972 and his areas of research have been reservoir characterization and modeling and IOR processes.

Registration:

Richard Finken, Forum Chairperson: 562-570-3961 or by email richard_finken@longbeach.gov.

Registration by June 6 would be most appreciated with payment in advance or at the door by cash or check. Dinner arrangements are being made with the Petroleum Club and selections will be advised soon. There will be no refunds for no-shows.

2006 CHARITY GOLF CLASSIC A GREAT SUCCESS

288 golfers had a great day on May 19, 2006 at the Los Serranos course at LASPE's annual Charity Golf Classic. The proceeds of this 18-hole shotgun start tournament go directly to fund LASPE's continuing education programs, community outreach activities, scholarship funds and SPE Student Chapter support. LASPE supported these activities at a level of over \$22,000 in 2005-2006 and hopes to increase outreach and funding again in the coming fiscal year.

The Board of Directors thanks Mark Shemaria and the tournament committee for their great organization and great work. The pre-tournament activities, the actual tournament and the banquet and raffle were sensational.

Here is a gallery of random photos for your viewing enjoyment.



2006 CHARITY GOLF CLASSIC – More Photos



SCHOLARSHIP REPORT – MAY 2006

Scholarship Report – May 2006

At the May 2006 Board meeting, the Directors approved the awarding of scholarships to eleven candidates. Seven of the candidates are sons and daughters of LASPE members either entering college as freshman in the fall or have completed their freshman year and are continuing their education. All are in engineering or are pursuing a curriculum in science or math. The other four candidates are college students in engineering at USC (3 students) or California State University at Long Beach.

The total value of all scholarship awards is \$13,000, \$9,000 of which comes from LASPE. A total of \$4,000 was contributed in the current budget year by Nancy Davis (Bruce Davis Memorial Scholarship) and BreitBurn Energy Company.

Congratulations to all scholarship winners!

- Carlos Branes HS Senior
- Stephanie Habliston, HS Senior
- Kimberly Kane, HS Senior
- Chris Newman, HS Senior
- Taylor Yuen, HS Senior
- Jennifer Habliston, Freshman, Ventura College
- Andrew Bolling Engineering, UC Berkley
- George Romero Jr., Mechanical Engineering, CSULB
- Reza Rastegar Moghadan, Masters Petroleum Engineering, USC
- Azra Kargar Masters Petroleum Engineering, USC
- Seyed Ehsan Tajer Masters Petroleum Engineering, USC

BOARD REPORT – MAY 2006

Board of Directors Report – May 2006

Following are key actions during the May 2006 Board meeting:

- Rod Kane presented a list of 11 scholarship candidates, which was approved. Scholarship awards total \$13,000, \$9,000 of which comes from LASPE.
- Scott McGurk reported he is planning a short course on “The Petrophysics of Shaly Sands with respect to Southern California Turbidites.”
- At Sam Sarem’s recommendation, the Board approved Brandy Fellers and Jack Smith as its nominees for Board openings in October, 2006. As required by the bylaws, these nominations will be posted on the LASPE website.
- The Board elected Rod Kane as Chairperson and Scott McGurk as Vice Chairperson for 2006-07.
- The Board agreed to hold its June 13, 2006 meeting at 1:00 p.m., ahead of Dr. Ershaghi’s planned waterflood performance workshop from 2:30 PM to 5:30 PM, followed by dinner at the Petroleum Club. The cost for the workshop will be \$50, including dinner.

All LASPE members are welcome to attend Board Meetings.

POSITIONS AVAILABLE

PXP - Plains Exploration & Production Company

RESERVOIR ENGINEERS Are you just beginning your career in the oil & gas industry? Looking for a challenge in a new, growth oriented company? Explore the opportunities at Plains Exploration & Production Company! We are currently seeking **Reservoir Engineers** for our Western Development Exploitation Unit based at our Bakersfield, California offices. PXP is the fourth largest oil and gas producer in the state of California. California assets include mature properties with long-lived reserves and significant development and exploitation opportunities. PXP has a very active drilling program with over 270 wells drilled in 2005 and approximately 300 wells anticipated in 2006. PXP averages 95% working interest in all asset areas.

PXP's **Reservoir Engineers** are part of the team involved in evaluating exploitation opportunities, estimating reserve potential and planning field development strategy. Other position responsibilities include carrying out field and reservoir studies, performing decline curve and other types of analyses, conducting steamflood and waterflood optimizations, creating remedial opportunities and implementing secondary and tertiary recovery processes.

Qualifications for **Reservoir Engineers** include a degree in Petroleum Engineering and 2 – 5 years related industry experience. Challenge your potential at PXP. Our expertise starts with innovative people and we are trusted in the most demanding of environments. Qualified candidates should apply to jobs@plainsxp.com. We offer a very competitive salary and benefits package, including generous relocation assistance to those that are eligible. All applicants must have authorization to permanently live and work in the U.S. EOE

SENOIR PLANNER - PXP

Are you ready to have a career and not just a job in the oil & gas industry? Looking for a challenge in a new, growth oriented company? Explore the opportunities at Plains Exploration & Production Company (PXP)! PXP is an independent oil and gas company primarily engaged in acquiring, developing, exploiting, exploring and producing oil and gas properties in the United States. We operate in six states with principle operations in the Los Angeles, San Joaquin and Santa Maria Basins onshore and offshore California; the Gulf Coast Basin onshore and offshore Louisiana (including the GOM) and the Val Verde portion of the greater Permian Basin in Texas. PXP is a significant oil and gas producer in the state of California and has a very active drilling program with over 270 wells drilled in 2005 and approximately 300 wells anticipated in 2006. We are currently seeking a **Senior Planner** for our Western Development Exploitation Unit (LAB) to be based at either our Bakersfield or Los Angeles, California office.

As a **Senior Planner** for PXP, you will be responsible for analysis, gathering and preparation of LOE and capital accrual information that is submitted on a monthly basis to senior management. Other position responsibilities include preparation of variance reports and ongoing reforecasting for LOE, CAPEX and production volumes; tracking tax (advalorem, production and severance) expense burden; participation in the budget process; and providing reports, maintenance and other support as needed. Interpersonal skills and written and oral communication at all levels are critical to the success of this job. This position must work closely with production accounting, engineers, geologists and field personnel in order to accomplish goals and meet deadlines.

Qualifications for **Senior Planner** include a degree (Finance, Accounting, Engineering, Geology or related) and 2 – 5 years related industry experience OR 5 – 10 years of progressively increasing responsibility in oil & gas planning. Advanced Excel skills are required, with prior experience in economic software (Peep or Aries) and accounting software (Essbase or Excalibur) helpful. Challenge your potential at PXP. Our expertise starts with innovative, energetic people who are comfortable in a fast paced environment, working with tight deadlines and not afraid of responsibility. Qualified candidates should apply to jobs@plainsxp.com. We offer a very competitive salary and benefits package, including a generous 401(k) match, fitness club reimbursement, industry tenure credit towards vacation and much more. All applicants must have authorization to permanently live and work in the U.S. EOE

POSITIONS AVAILABLE



NafTex Operating Company Senior Operations Engineer

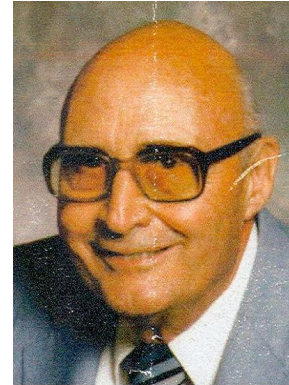
NafTex is an independent oil and gas company with a successful track record of acquisitions, dispositions, exploitation and development of producing properties since 1988 in California. We are offering immediate employment opportunity for a seasoned field oriented Operations/Production Engineer to fill a new position in our Bakersfield, California offices. This key position will provide technical support and field level project management for implementation of capital programs, performance monitoring and evaluation of opportunities for growth of assets.

Responsibilities include property review for identification of undeveloped reserves, developing exploitation strategies, developing plans and capital and expense budgets for implementation of a variety of development projects including drilling, expansion of thermal operations, facilities and pipeline design and construction. Interact daily with development geologist, production superintendent, foreman, service companies, regulatory agency personnel and a variety of consultants. Oversee routine well surveillance and maintenance and identify new opportunities to increase production and improve the performance of existing and future thermal projects. Gather and analyze field level data including production and injection data, temperature and pressure measurements and fluid levels to perform decline curve analysis, cyclic steam performance analysis and equipment optimization. Monitor lease operating expenses to achieve cost efficiencies and identify profit improvement opportunities. Ensure safety, environmental permitting, reporting and compliance issue are met. Assist in acquisition and disposition evaluations.

Bachelor's degree in Petroleum, Chemical or Mechanical engineering plus a minimum of 7 years of industry experience is required. Requires excellent communication and strong interpersonal skills to work effectively in a team environment and report in writing and orally to senior management. Must be self motivated with the ability to work independently and to handle multiple projects. Must have experience in writing and implementing a variety of remedial and work-over programs, artificial lift, well site supervision, designing and monitoring thermal projects especially in the area of cyclic steam operations and be familiar with facilities design including tank batteries, production and handling facilities and pipeline design. Be able to analyze lease operating expenses. Have an understanding of reservoir mechanics and geology and have the ability to analyze well logs. Drilling experience is beneficial.

The successful candidate will enjoy a generous and competitive benefit package commensurate with experience. To apply, email your resume and cover letter to hameri@nafTex.net

**In Memory of
THOMAS HARRISON BENTON
1917 - 2006
SPE Legion of Honor Recipient**



Thomas passed away on April 27, 2006 at Mission Viejo, California at the age of 89 years. He was inducted into the Society of Petroleum Engineers Legion of Honor in 2005 for 50 years of consecutive membership in SPE for important contributions to the Society and the Oil Industry. He will be missed by all of us in the industry. He gave 57 years to the production of energy for his country. Tom began his remarkable career in our industry in 1945 and spent much of his time in Southern California. Notable achievements include serving in senior engineering positions for several companies, and also establishing a successful consultation business. In addition to SPE, he was an active member of the American Petroleum Institute, Los Angeles Basin Chapter from 1945 to the present.

Thomas was born in San Diego, California on July 8, 1917 and was laid to rest at Pacific View Memorial Park in Corona del Mar, California with Military Honors on Saturday, May 6, 2006. His wife of 36 years, Marjorie Sewell Benton, his brother Phil and sister Carroll and 40 nieces and nephews survive Tom. Marjorie Benton has requested that if anyone cares to make a donation in Tom's name to do so to the R.M. Pyle's Boys Camp

71% Pass 2005 Petroleum PE Exam

NCEES and the State Engineering Boards released their 2005 Professional Engineering Exam results in February. Nationwide, the Petroleum Engineering Exam recorded a 71% pass rate (highest nationwide). The estimated pass rates of a few other engineering disciplines were:

Chemical	57%	Agricultural	25%
Civil	46%	Fire Protection	42%
Electrical	46%	Industrial	48%
Environm'tal	55%	Metallurgical	35%
Mechanical	52%	Mining	46%
Structural	40%	Nuclear	62%

The Petroleum pass rates in 2005 for a few states:

Alaska	67%	Louisiana	70%
California	25%	Oklahoma	100%
Colorado	50%	Texas	85%

What are the requirements to take the Petroleum PE Exam? Today, California requires that you have:

1. An engineering, math or science degree.
2. Passed the Fundamentals, or EIT Exam.
3. At least four years of professional experience.

Interested? Contact the California State Engineering Board at (916) 263-2230 for application forms. State web sites are also available at: www.ncees.org/licensure/licensing_boards. The application deadline to take this year's PE Exam is July 21, 2006. This year's test will be given on Friday, October 27, 2006.

DAVID B. DEL MAR
Consulting Petroleum Geologist
California Registered Geologist #634

Development - Thermal EOR - Property Reviews

2027 Park Drive
Los Angeles, CA 90026

C (323) 219-3804
H (323) 664-3358
dbdelmar@earthlink.net

Continuing Education Course
PROFESSIONAL REGISTRATION REVIEW
COURSE FOR PETROLEUM ENGINEERING
COURSE DESCRIPTION: The Course covers most topics that are found on the State Board Petroleum Engineering Professional Examination.
WHO SHOULD ATTEND: Engineers who are planning on taking the PE Examination in Petroleum Engineering this fall. **INSTRUCTOR:** Bing Wines, PE
LOS ANGELES COURSE (8:00 AM - 5:00 PM)
Monday through Friday
October 2 - 6, 2006

For More Information: 405-722-6761
E Mail: bingwines@aol.com
WINROCK ENGINEERING, INC.
P. O. BOX 94005 OKLAHOMA CITY, OK, 73143

Save These Dates!

California State Lands Commission presents

Prevention First 2006

An Onshore & Offshore Pollution Prevention Symposium & Technology Exhibition

Major topics include:

- ◆ Ballast Water Management ◆ Coastal Hazards and Seeps ◆ Human & Organizational Factors ◆
- ◆ Liquefied Natural Gas ◆ Marine Oil Terminal Engineering Standards ◆ Marine Safety and Maritime Seaport Security ◆
- ◆ Pipeline Integrity ◆ Platforms and Safety Management ◆
- ◆ Over 40 Technology Exhibits ◆

September 12-13, 2006

The Westin Long Beach Hotel ◆ Long Beach, California

Early registration fee-\$225 ◆ After August 23-\$275

Register online: at www.slc.ca.gov

Symposium registration cancellations received in writing by August 23 are subject to a \$25 processing fee.

After that date, substitutions will be accepted, but no refunds will be provided. No-shows will be billed the full registration fee.

Please notify SPE Headquarters directly with change of address: P.O. Box 833836, Richardson, TX 75083 Tel: (800) 456-6863 Fax: (972) 952-9435 or go to <http://www.spe.org/mbrservices/index.cfm>

We appreciate your feedback. Send your comments/suggestions/contributions to Larry Gilpin, Editor: larry@4thforge.com If you no longer wish to receive this newsletter, please send an email to larry@4thforge.com

Visit our website at
www.iaspe.org