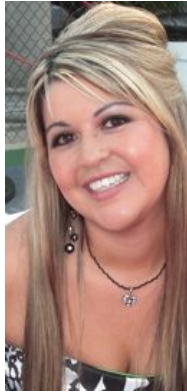


Los Angeles Basin Section
www.laspe.org

Los Angeles Basin Section Society of Petroleum Engineers

A Message from the Chair



My name is Vanessa Marie Perez and I have the honor of representing the Los Angeles SPE section for the 2009-2010 year. I would first like to introduce myself and explain how I became involved

in the oil and gas industry and SPE. I became an SPE member in 2003 when I was earning my Bachelors Degree in Geology and working as a student assistant in Bakersfield, California for the Division of Oil Gas and Geothermal Resources (DOGGR). My summers were spent as an intern with the Department of Energy, Rocky Mountain Oilfield in Casper Wyoming and Schlumberger as a Field Engineer in Bossier City, Louisiana.

Upon graduation, I was hired in 2005 as an Energy & Mineral Resources Engineer for DOGGR where I witnessed and approved numerous tests and operations in the Los Angeles basin with regard to drilling, plugging, and abandonment of wells, inspections of onshore drill sites and offshore platforms. I also was involved with DOGGR's Construction and Development Site Plan Program projects inspecting and testing abandoned oil wells in and around newly constructed buildings. After two years of service with DOGGR, I transferred to the State Lands Commission, Mineral Resources Management Division, where I review mineral extraction leases, permits, and agreements for mineral exploration and development.

continues on page 4...

Contents

Petroleum Technology Forum
October 13 - Formation
Damage - Any Time, Any Place,
Any Where...

page 1 & 2

Calendar

page 2

LASPE 2010 WRM Call for
Abstracts page 3

LASPE Board Meeting
Summary for September 16th
page 5

Current Board, Officers &
Chairs

page 6

Position Available, Services
Offered

page 7

SPE International Conference -
CO2 Capture, Storage and
Utilization

page 8

PETROLEUM TECHNOLOGY FORUM PROGRAM, OCTOBER 13

The next Petroleum Technology Forum will be held on Tuesday, October 13, 2009 at the Long Beach Petroleum Club, 3636 Linden Avenue, Long Beach, CA 90807. The speaker will be SPE distinguished lecturer Michael Byrne of Senegy Limited. He will present "Formation Damage - Any Time, Any Place, Any Where...". Abstract and speaker bio follow.

Location:	Time:	Cost:
Long Beach Petroleum Club 3636 Linden Avenue Long Beach, CA 90807	Registration: 11:30 AM Buffet Lunch: 11:30 AM Presentation: 12:00-1:00 PM	\$20.00 members, Free for students.

continues on page 2...

FORUM FROM PAGE 1 . . .

Formation Damage -**Any Time, Any Place, Any
Where...****Michael Byrne, Senergy, Ltd.****Guest Speaker Oct 13**

It has long been recognized that formation damage during drilling, completion, production, well intervention, and injection has a serious impact on well performance, field life, and value. Increasingly, formation damage has become a key factor in the successful development or otherwise of challenging reservoirs. Understanding and identifying damage has significant impact, and the process and knowledge has improved dramatically in the last twenty years. This lecture will make the case that formation damage can occur at any time in a well life; any place, i.e. in exploration, appraisal, production, or injection wells; and any where, i.e. in the completion, the very near wellbore, or deeper in to the formation.

This presentation attempts to demystify many of the legends of formation damage and their evaluation. Fines migration and wettability alteration have long been the mechanisms employed by engineers (or geologists) to explain and justify almost every well or reservoir behavior. These mechanisms share the characteristics of being difficult to prove and identify and having

serious positive or negative effect on fluid flow. Their complexity should not be a barrier to understanding these mechanisms. With appropriate study, these processes can be identified, understood, and at least semi-quantified for most reservoirs. With understanding, it is then possible to evaluate damage mitigation or remediation. Fresh examples of the process of understanding and avoiding damage will be presented.

The cost of formation damage to our industry is difficult to quantify precisely, but it is undoubtedly true that less damage is better than more damage and significant productivity or injectivity can be added through damage awareness and mitigation. An attempt is made to quantify the cost of damage by country and region to put the technology presented in perspective. In 2007, the global annual cost of formation damage is estimated at one hundred thousand million dollars! Members should take away some insight in to formation damage mechanisms as well as an appreciation of the cost of damage to our industry.

A graduate of University College Dublin, Michael Byrne has worked in the oil industry for 19 years, and has spent 18 years evaluating formation damage and sand control problems. He has written and presented various training courses, and acted as a consultant to major oil companies worldwide. Numerous technical publications include key SPE papers on drilling and completion related formation damage mechanisms. He has been a principal author of papers on

Calendar**2009****October 13th**

Petroleum Technology Forum at The Long Beach Petroleum Club
LASPE Board Meeting

November 2 - 4th

SPE International Conference on CO2 Capture, Storage and Utilization
La Jolla, CA

November 10th

LASPE Board Meeting and Petroleum Technology Forum at the Long Beach Petroleum Club

2010**May 27-29th WRM Anaheim, CA**

LASPE and the AAPG, Pacific Section will host the Western Regional Meeting at the Anaheim Convention Center.

recommended laboratory practice and on description of formation damage mechanisms. He has served SPE as technical editor, short course instructor, and steering committee member and session chair at several SPE conferences, workshops and forums. Michael joined Senergy in Aberdeen in August 2007 as principal formation damage consultant.

Katherine Wallgren
Forum Chairperson
Katherine.Wallgren@oxy.com

2010 SPE WRM - CALL FOR ABSTRACTS

The 2010 SPE Western Regional Meeting (WRM) will be held May 27-29, 2010 in conjunction with the AAPG Pacific Section & Cordilleran GSA in Anaheim California. The theme of the joint conference this year is "From Mountains to Main Street."

This conference will focus on technologies and issues affecting oil and gas fields in the Western North American Region. We desire presentations by engineers, geoscientists, managers, and team leaders that address improving operating costs and efficiency, new oil and gas technologies, and insights on regulatory and climate change legislation that affect energy supplies.

Technical papers are encouraged. To attract up-to-the-minute presentations, abstracts will also be accepted for poster sessions, panel sessions, and technical workshops that do not require papers. Conference sessions will be formulated based upon the abstracts submitted and accepted by the technical program committee.

Abstracts should be submitted to the program committee by November 30, 2009 that specify the type presentation, contain no more than 300 words, and summarize the subject matter, results of work, and conclusions in the topics listed below:

- Advanced Reservoir Modeling Concepts
- Arctic Operations/Permafrost Issues/Hydrates/Alaska Gas Pipeline
- Advanced Geophysical Techniques for Oil and Gas Development and Production Operations
- Advances in Drilling and Completion Operations applicable to WNAR Reservoirs
- Advances in Environmental Technologies
- California Extra Heavy Oil Resources
- Case Studies
- CO2 Capture and Storage
- Economic Uncertainty and Risk Analysis
- EOR Technologies (Thermal/Chemical/Miscible)
- Flow Assurance
- California Geothermal Systems
- Integrated Operations
- Locating By-Passed Oil
- Mature waterflood Management
- Production Enhancement
- Redevelopment of California Offshore Resources
- Renewable Energy to Cut OPEX
- Reservoir Characterization
- Social Responsibility, Health, Air and Water Quality and GHG Emissions
- Tight Plays: Monterey (Diatomites, fractured Siliceous Rocks), Bakken
- Waste Disposal

Program Committee Procedures: The paper proposal should contain significant new knowledge or experience in some field of relevance. The substance of the proposed paper must not have been published previously in trade journals or other professional or technical journals. Prior to paper proposal submission, clearance must be obtained. Any problems concerning clearance should be outlined when the paper proposal is submitted. All authors of papers presented at 2010 WRM will be required to complete and submit a copyright release form to SPE or submit the copyright exemption form where applicable.

Manuscript Preparation: Authors of papers selected for 2010 WRM will be notified by December 14, 2009. Authors offering papers should fully understand that a manuscript will be required for each accepted paper. Manuscripts will be required by March 29, 2010 for inclusion in the Proceedings CD-ROM. SPE operates a "no paper, no podium" policy which means that if the manuscript is not received by the due date then it will be withdrawn from the program. The maximum desired length of any paper is 7,000 words, including figures and tables. Detailed instructions on the preparation of manuscripts and presentations will be sent to the corresponding author of each accepted paper.

Iraj Ershaghi
Program Committee Chairman

Program Committee

Fred Aminzadeh	Zuwa Omoregie
Ahmed Badruzzaman	Gordon Pospisil
Serge Baghdikian	Mark Shemaria
Ed Behm	Allan Spivak
Steve Cheung	Mike Utt
Abhijit Dandekar	Rajendra Upadhyay
Steve Horner	Marina Voskianian
Anthony R. Kovscek	Charlie Webb
George Moridis	Chris Williamson
	Zhengming Yang

Message from the Chair

... continues from page 1

In 2007, I was asked by the Los Angeles SPE board to take a vacancy as Director through 2009, and I gladly accepted. Last year, I was the Vice Chairperson and I continued my responsibilities for Community Outreach and on the committees for Scholarship and Science Fairs.

During my time as a board member, I have participated in the SPE Easter Egg Hunts, LA/ Orange County Science Fairs, MESA Energy Day, Scholarship committee, and gave lectures to students through the Future Scientists and Engineers of America (FSEA) program. I also volunteered for the Read-In Career Days at the International Elementary School in Long Beach. I enjoy volunteering and inspiring young students to become attracted to Science and Engineering and I will continue to do so as Chairperson.

My goals are to work hard to represent the members of LASPE as we move forward to a new and more challenging time. I think it is wonderful that we have a special relationship in our community and I will make sure it continues through my term. I urge our members to stay involved and urge everyone to introduce a colleague to the society. My goal is to continue our community involvement, increase our membership, and serve best the interests of our Section in all issues and concerns.

We are currently preparing to help host our 2010 SPE Western North American Regional Meeting (WRM). I want to thank Dr. Jalal Torobzabach for his leadership in accepting the position as meeting chairperson and Scott Hara for his productive energy and WRM experience to serve as meeting co-chairperson. We will keep you posted on the meeting's progress and will need your support to help make this another successful WRM.

Again, I would like to thank Dr. Torobzabach for his leadership and for doing a great job as our LASPE Section Chairperson for the 2008-2009 year. I also look forward to working with our great staff and appreciate your support and confidence. See you at the monthly forum meetings.

Vanessa Perez

Chairperson 2009-2010 season

See page 8 for CO₂ details!



See page 8 for CO₂ details!

Visit the LASPE Website

At

~www.LASPE.org

LASPE BOARD MEETING SUMMARY
SEPTEMBER 16, 2009

An official Meeting-Quorum was met

Attendees: Jalal Torabzadeh, Vanessa Perez, Sam Sarem, AB Gorashi A., Scott Hara, Eric Withjack, and (Brandy Fellers, Mike Utt & Candra Janova) by proxy.

1. **Call to Order:** Enough members to meet quorum.
2. **Approval Agenda:** September 16, 2009 minutes were approved.
3. **Approved minutes:** June 9, 2009 Minutes were postponed.
4. **Announcement:** Scott Hara will lead the MESA field trip on November 3, 2009 to Thums Islands, forty five (45) students and seven (7) adults.
5. **Student Chapter:** The Board has approved fund to support partial expenses for four (4) students from University Southern California (USC), two (2) Students from California State University Long Beach (CSLB) with \$500.00 for attending the 2009 Annual Technical Conference and Exhibition (ATCE) in New Orleans on October 5, 2009.
6. **SPE – PSAAPG/CGSA Joint Meeting:** Scott Hara along with the Board members and Curtis Henderson of Pacific Section American Association of Petroleum Geologists (PSAAPG) were Negotiating Memorandum of Understanding (MOU) to conduct the 2010 SPE Western North American Regional Meeting – May 22-31, 2010. A second meeting will be scheduled to complete MOU.
7. **Treasure’s Report:** Rick Finken was unable to attend the meeting, provided a detailed treasure report which covers the period of 10/01/08 through 8/31/09 and the proposed report for 2009-2010.. Please refer to the attached treasure report. The discussion of the Treasure’s Report was postponed for the next meeting.
8. **Meeting adjourned**

CURRENT BOARD, OFFICERS & CHAIRS

Current Board, Officers and Chairs		
E-mail	Names	Position
brandy_fellers@earthlink.net	Brandy Fellers	Senior past chair
Candra_Janova@oxy.com	Chandra Janova	Young Professionals
dremmw@yahoo.com	Eric Withjack	Board Member-2010
emayer2@socal.rr.com	Ed Mayer	Awards and Recognition
SantiaE@slc.ca.gov	Ed Santiago	Elementary Outreach
goras9@aol.com	AB Gorashi	Board Member-2011
Katherine_Wallgren@oxy.com	Katherine Wallgren	Forum Chair
Larry@4thForge.com	Larry Gilpin	Webmaster
Mark_Shemaria@oxy.com	Mark Shemaria	Golf Tournament Chair
mikeutt@roadrunner.com	Mike Utt	Board member-2010
PerezV@slc.ca.gov	Vanessa Perez	2009-2010 Chairperson
Rcvbelmar@aol.com	Robert Visser	Assistant Treasurer
Rick_Reeves@oxy.com	Rick Reeves	Board member-2011
Sam4IPRC@aol.com	Sam Sarem	Nominating Committee
Scott_Hara@oxy.com	Scott Hara	Community Outreach
SmithjL@slc.ca.gov	Jack Smith	Scholarship Chair
torabzad@csulb.edu	Jalal Torabzadeh	Junior past chair
lovesm@ix.netcom.com	Scott McGurk,	2006-2007-Past year
Richard.finken@longbeach.gov	Rick Finken	Treasurer
rweibel@semprautilities.com	Rudy Weible	

POSITIONS AVAILABLE

Associate Mineral Resources Engineer

OIL & GAS &/OR ENVIRONMENTAL EXPERIENCE.

CA State Lands Commission will hold an open exam for Associate Mineral Resources Engineer in Long Beach.

\$8,115 - 9,859/month

Obtain required qualifications & application at

www.slc.ca.gov or 916-574-1910.

Final Filing date November 2, 2009.

SERVICES OFFERED

**Reservoir Management
Drilling Programs
Waterflood Optimization
Tertiary Recovery / EOR
Economic Evaluation
Acquisition and Divestitures**

Scott W. McGurk
Petroleum Engineering Consultant
LA Basin SPE Chairman 2009
714-403-9839
LOVESM @ IX.NETCOM.COM

DAVID B. DEL MAR
Consulting Petroleum Geologist
California Registered Geologist #634

Development - Thermal EOR - Property Reviews

2027 Park Drive
Los Angeles, CA 90026

C (323) 219-3804
H (323) 664-3358
dbdelmar@earthlink.net

Please notify SPE Headquarters directly with change of address: P.O. Box 833836, Richardson, TX 75083 Tel: (800) 456-6863 Fax: (972) 952-9435 or go to <http://www.spe.org/mbrservices/index.cfm> We appreciate your feedback. Send your comments/suggestions/contributions to Larry Gilpin, Editor: larry@4thforge.com

VISIT the LA SPE Web Site @ www.LASPE.org



Mark your calendar and [register today](#) to attend the first **SPE International Conference on CO2 Capture, Storage, and Utilization**, being held 2-4 November 2009 at the Hyatt Regency La Jolla in San Diego, California, USA.

Under the theme, "Solutions and Technology for Our Energy and Climate Future," this conference sets the stage to define the issues and challenges of CO2 in the E&P industry. The technical program features high-quality papers; ePoster sessions; and a 4-part plenary session designed to orient discussion on CO2 capture, transport, regulation, and storage.

The plenary session, being held Tuesday, 3 November, includes the following participants:

- Richard Rhudy, Electric Power Research Institute
- Joy Kadnar, US Department of Transportation
- Darrick Eugene, Vinson & Elkins
- Julio Friedmann, Lawrence Livermore National Laboratory
- Richard Esposito, Southern Company
- Bruce Kobelski, US Environmental Protection Agency

Hear the latest on carbon capture and storage during the following technical sessions:

- Storage Site Screening and Injection Strategies
- Permitting and Sourcing CO2 and Equipment Needs
- Optimizing Simultaneous EOR/Sequestration as a Function of Carbon Price
- MMV (MVA) Leakage Detection Activities
- Field- and Pilot-Scale Activities Case Studies
- Well Drilling, Completion, and Assessment
- Injection Operations (including compression, remediation, and mitigation strategies)

Explore the [full technical program](#).

Join us on Monday, 2 November for [Geological Aspects of CO2 Injection in Subsurface Reservoirs Affecting CO2 EOR and Storage](#). This 1-day, pre-conference seminar addresses important reservoir attributes, tools, and experiences of CO2 EOR and applies their parameters to the storage phase.

We look forward to seeing you in San Diego!

Program Chairpersons:

Sally Benson, Stanford University

Tom Blasingame, Texas A&M University

George Koperna, Advanced Resources International

Sponsorship opportunities are still available. For more information, contact the SPE sales department: Joan Payne, jpayne@spe.org or Kirk Colligan, kcolligan@spe.org.

Don't forget to book your hotel accommodations! Rooms have been reserved at the Hyatt Regency La Jolla. Secure your housing at www.spe.org/events/co2 by **16 October 2009** to receive the conference discount rate.